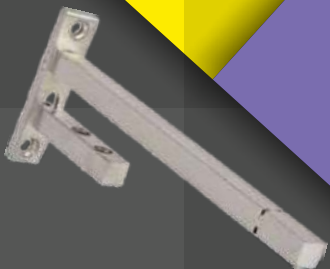
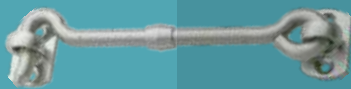




GENUINE
BRASS HARDWARE

PrajvalTM

PREMIUM BRASS HARDWARE



ABOUT US

Patel Metal Products is a reputed company established in 1996 and well known manufacturer of Brass & Stainless Steel Hardware Products. Our wide product range includes Hinges, Fancy Tower Bolts, Glass Fitting Accessories, Hardware Fittings etc. We assure our worldwide clients of premium quality goods and value added after sales services at competitive prices.

CLIENT SATISFACTION

Being a client-centric organization all our endeavors are directed towards achieving highest level of customer satisfaction. Further, our commitment, time-lined delivery, and competitive prices have helped us in gaining the trust and confidence of the clients. We also conduct various checks and tests to ensure delivery of defect free products. In addition, our expertise enables us to deliver custom designed products, manufactured in compliance with clients' specifications.

WHY US ?

Following are some of the aspects that have helped us in keeping ourselves ahead of our competitors and preferred business associates of our clients :

- High quality and innovative designs.
- Excellent Customer Service.
- Ethical Business practices.
- Prompt delivery. • Competitive prices.
- Customized products to suit the requirements of our clients.
- Huge infrastructure, state-of-the-art technology, latest machinery and well qualified team of engineers.

Butt Hinges

Size in Inch

3" x 3/8 x 5/8

3" x 1/2 x 3/4

3" x 3/4 x 3/4

3" x 1/2 x 1

3" x 3/4 x 1

3" x 1 x 1

4" x 3/8 x 5/8

4" x 1/2 x 3/4

4" x 3/4 x 3/4

4" x 1/2 x 1

4" x 3/4 x 1

4" x 1 x 1



Railway Hinge

Size in Inch

4" x 1 x 1/8

5" x 1 x 1/8

4" x 1.1/8 x 1/8

5" x 1.1/8 x 1/8

4" x 1.1/8 x 5/32

5" x 1.1/8 x 5/32

4" x 1.1/4 x 5/32

5" x 1.1/4 x 5/32

6" x 1.1/4 x 5/32

4" x 1.1/4 x 3/16

5" x 1.1/4 x 3/16

6" x 1.1/4 x 3/16

5" x 1.1/2 x 3/16

6" x 1.1/2 x 3/16

5" x 1.1/2 x 5/32

6" x 1.1/2 x 5/32

5" x 1.3/4 x 3/16

6" x 1.3/4 x 3/16

8" x 1.1/4 x 3/16

8" x 1.1/2 x 3/16

8" x 1.3/4 x 3/16

10" x 1.1/4 x 3/16

10" x 1.1/2 x 3/16

10" x 1.3/4 x 3/16

12" x 1.1/4 x 3/16

12" x 1.1/2 x 3/16

12" x 1.3/4 x 3/16





W-Type Hinges

Size in Inch

2" Round

2"

3"

4"



Z-Type Hinges

Size in Inch

3" x 1/2"

3" x 3/4"

3" x 1"

4" x 1/2"

4" x 3/4"

4" x 1"



Two in One Lock Hinges

Size in Inch

3" x 1/2" x 6 mm

3" x 1/2" x 12 mm

3" x 1/2" x 19 mm

3" x 1/2" x 25 mm

3" x 3/4" x 6 mm

3" x 3/4" x 12 mm

3" x 3/4" x 19 mm

3" x 3/4" x 25 mm

4" x 1/2" x 6 mm

4" x 1/2" x 12 mm

4" x 1/2" x 19 mm

4" x 1/2" x 25 mm

4" x 3/4" x 6 mm

4" x 3/4" x 12 mm

4" x 3/4" x 19 mm

4" x 3/4" x 25 mm



W-Type Lock Hinges

Size in Inch

2"

3"

4"



Z-Type Lock Hinges

Size in Inch

3" x 1/2"

3" x 3/4"

3" x 1"

4" x 1/2"

4" x 3/4"

4" x 1"



Two in One Lock Hinges

Size in Inch

3" x 1/2" x 6 mm

3" x 1/2" x 12 mm

3" x 1/2" x 19 mm

3" x 1/2" x 25 mm

3" x 3/4" x 6 mm

3" x 3/4" x 12 mm

3" x 3/4" x 19 mm

3" x 3/4" x 25 mm

4" x 1/2" x 6 mm

4" x 1/2" x 12 mm

4" x 1/2" x 19 mm

4" x 1/2" x 25 mm

4" x 3/4" x 6 mm

4" x 3/4" x 12 mm

4" x 3/4" x 19 mm

4" x 3/4" x 25 mm

L-Type Hinges

Size in Inch p



3" x 3/8" x 6 mm

3" x 3/8" x 12 mm

3" x 3/8" x 19 mm

3" x 1/2" x 6 mm

3" x 1/2" x 12 mm

3" x 1/2" x 19 mm

3" x 1/2" x 25 mm

3" x 3/4" x 6 mm

3" x 3/4" x 12 mm

3" x 3/4" x 19 mm

3" x 3/4" x 25 mm

3" x 1" x 6 mm

3" x 1" x 12 mm

3" x 1" x 19 mm

3" x 1" x 25 mm

4" x 3/8" x 6 mm

4" x 3/8" x 12 mm

4" x 3/8" x 19 mm

4" x 1/2" x 6 mm

4" x 1/2" x 12 mm

4" x 1/2" x 19 mm

4" x 1/2" x 25 mm

4" x 3/4" x 6 mm

4" x 3/4" x 12 mm

4" x 3/4" x 19 mm

4" x 3/4" x 25 mm

4" x 1" x 6 mm

4" x 1" x 12 mm

4" x 1" x 19 mm

4" x 1" x 25 mm

L-Type Lock Hing

Size in Inch

3" x 3/8" x 6 mm
3" x 3/8" x 12 mm
3" x 3/8" x 19 mm
3" x 1/2" x 6 mm
3" x 1/2" x 12 mm
3" x 1/2" x 19 mm
3" x 3/4" x 6 mm
3" x 3/4" x 12 mm
3" x 3/4" x 19 mm
4" x 3/8" x 6 mm
4" x 3/8" x 12 mm
4" x 3/8" x 19 mm
4" x 1/2" x 6 mm
4" x 1/2" x 12 mm
4" x 1/2" x 19 mm
4" x 3/4" x 6 mm
4" x 3/4" x 12 mm
4" x 3/4" x 19 mm



Our L-Lock Hinges 90° Lock is convenient way to avoid rod latch and door chain



Duck(Overlay) Hinge

Size in Inch

2" x 19 mm (Door) x 19 mm (Frame)
3" x 19 mm (Door) x 19 mm (Frame)
4" x 19 mm (Door) x 19 mm (Frame)
2" x 19 mm (Door) x 25 mm (Frame)
3" x 19 mm (Door) x 25 mm (Frame)
4" x 19 mm (Door) x 25 mm (Frame)
2" x 25 mm (Door) x 19 mm (Frame)
3" x 25 mm (Door) x 19 mm (Frame)
4" x 25 mm (Door) x 19 mm (Frame)
2" x 25 mm (Door) x 25 mm (Frame)
3" x 25 mm (Door) x 25 mm (Frame)
4" x 25 mm (Door) x 25 mm (Frame)



Half



Full

Butt Hinges

Size in Inch



3" x 3/8 x 5/8 - M

3" x 3/8 x 5/8 - H

3" x 1/2 x 3/4 - M

3" x 1/2 x 3/4 - H

3" x 3/4 x 3/4 - M

3" x 3/4 x 3/4 - H

3" x 1/2 x 1 - M

3" x 1/2 x 1 - H

3" x 3/4 x 1 - M

3" x 3/4 x 1 - H

3" x 1 x 1 - M

3" x 1 x 1 - H

4" x 3/8 x 5/8 - M

4" x 3/8 x 5/8 - H

4" x 1/2 x 3/4 - M

4" x 1/2 x 3/4 - H

4" x 3/4 x 3/4 - M

4" x 3/4 x 3/4 - H

4" x 1/2 x 1 - M

4" x 1/2 x 1 - H

4" x 3/4 x 1 - M

4" x 3/4 x 1 - H

4" x 1 x 1 - M

4" x 1 x 1 - H

L-Type Hinges

Size in Inch



3" x 3/8" x 6 mm

3" x 3/8" x 12 mm

3" x 3/8" x 19 mm

3" x 1/2" x 6 mm

3" x 1/2" x 12 mm

3" x 1/2" x 19 mm

3" x 1/2" x 25 mm

3" x 3/4" x 6 mm

3" x 3/4" x 12 mm

3" x 3/4" x 19 mm

3" x 3/4" x 25 mm

3" x 1" x 6 mm

3" x 1" x 12 mm

3" x 1" x 19 mm

3" x 1" x 25 mm

4" x 3/8" x 6 mm

4" x 3/8" x 12 mm

4" x 3/8" x 19 mm

4" x 1/2" x 6 mm

4" x 1/2" x 12 mm

4" x 1/2" x 19 mm

4" x 1/2" x 25 mm

4" x 3/4" x 6 mm

4" x 3/4" x 12 mm

4" x 3/4" x 19 mm

4" x 3/4" x 25 mm

4" x 1" x 6 mm

4" x 1" x 12 mm

4" x 1" x 19 mm

4" x 1" x 25 mm



W Hinges

Size in Inch

1.1/2" - L
1.1/2" - M
2" - L
2" - M
2" - H
3" - L
3" - M
3" - H
4" - L
4" - M
4" - H



Two in One Hinges

Size in Inch

3" x 1/2" x 6 mm
3" x 1/2" x 12 mm
3" x 1/2" x 19 mm
3" x 1/2" x 25 mm
3" x 3/4" x 6 mm
3" x 3/4" x 12 mm
3" x 3/4" x 19 mm
3" x 3/4" x 25 mm



Z-Type Hinges

Size in Inch

3" x 1/2"
3" x 3/4"
4" x 1/2"
4" x 3/4"

L-Type Lock Hinges

Size in Inch

- 3" x 3/8" x 6 mm
- 3" x 3/8" x 12 mm
- 3" x 3/8" x 19 mm
- 3" x 1/2" x 6 mm
- 3" x 1/2" x 12 mm
- 3" x 1/2" x 19 mm
- 3" x 3/4" x 6 mm
- 3" x 3/4" x 12 mm
- 3" x 3/4" x 19 mm
- 4" x 3/8" x 6 mm
- 4" x 3/8" x 12 mm
- 4" x 3/8" x 19 mm
- 4" x 1/2" x 6 mm
- 4" x 1/2" x 12 mm
- 4" x 1/2" x 19 mm
- 4" x 3/4" x 6 mm
- 4" x 3/4" x 12 mm
- 4" x 3/4" x 19 mm



Our L-Lock Hinges 90° Lock is convenient way to avoid rod latch and door chain



Bearing Hinges with lubrication for extra smoothness and noiseless movement.

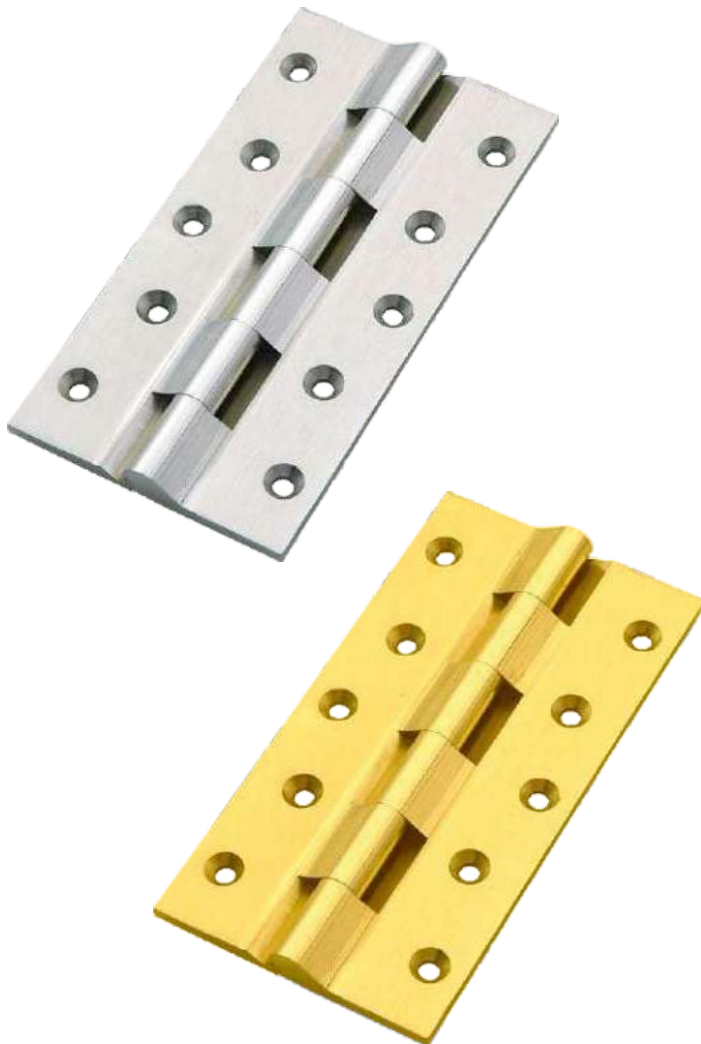
Bearing Hinges

Size in Inch

- 4" x 3 x 3
- 5" x 3 x 3
- 6" x 3 x 3
- 4" x 3 x 4
- 5" x 3 x 4
- 6" x 3 x 4
- 5" x 3 x 5
- 6" x 3 x 5
- 5" x 3.5 x 5
- 6" x 3.5 x 5

Railway Hinges

Size in Inch



3" x 7/8" x 1/8" L

3" x 7/8" x 1/8" M

4" x 1" x 1/8"

5" x 1" x 1/8"

4" x 1" x 5/32"

5" x 1" x 5/32"

4" x 1.1/2" x 1/8"

5" x 1.1/8" x 1/8"

6" x 1.1/8" x 1/8"

4" x 1.1/8" x 5/32"

5" x 1.1/8" x 5/32"

6" x 1.1/8" x 5/32"

4" x 1.1/8" x 5/32"-H

5" x 1.1/8" x 5/32"-H

6" x 1.1/8" x 5/32"-H

4" x 1.1/8" x 3/16"

5" x 1.1/8" x 3/16"

6" x 1.1/8" x 3/16"

4" x 1.1/4" x 5/32"

5" x 1.1/4" x 5/32"

6" x 1.1/4" x 5/32"

5" x 1.1/4" x 5/32"-H

6" x 1.1/4" x 5/32"-H

5" x 1.1/4" x 3/16"

6" x 1.1/4" x 3/16"

4" x 1.1/2" x 5/32"

5" x 1.1/2" x 5/32"

6" x 1.1/2" x 5/32"

5" x 1.1/2" x 5/32"-H

6" x 1.1/2" x 5/32"-H

5" x 1.1/2" x 3/16"

6" x 1.1/2" x 3/16"

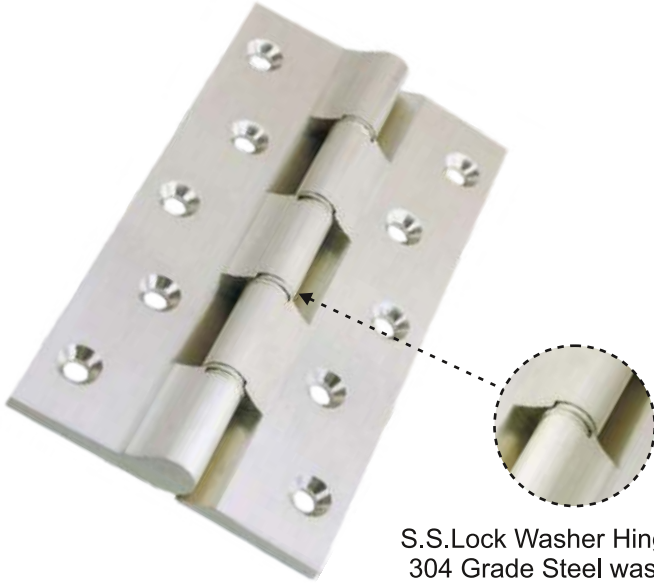
8" x 1.1/2" x 5/32"

5" x 1.3/4" x 3/16"

6" x 1.3/4" x 3/16"

5" x 2" x 3/16"

6" x 2" x 3/16"



S.S.Lock Washer Hinges with 304 Grade Steel washer are interlocked with their corresponding flap of hinges, and designed for Long Life and Maintenance Free.

Railway Washer Hinges

Size in Inch

4" x 1.1/8" x 5/32"

5" x 1.1/8" x 5/32"

6" x 1.1/8" x 5/32"

4" x 1.1/4" x 5/32"

5" x 1.1/4" x 5/32"

6" x 1.1/4" x 5/32"

5" x 1.1/2" x 5/32"

6" x 1.1/2" x 5/32"



Parliament Hinges

Size in Inch

3" x 3"

3" x 4"

4" x 4"

5" x 4"

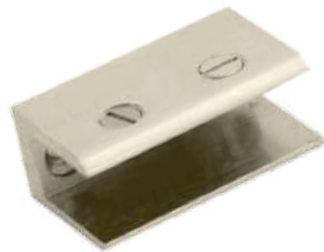
6" x 4"



D Bracket

Size in Inch

2" x 6mm
2" x 8mm
2" x 10mm
2" x 12mm



Square Bracket

Size in Inch

2" x 6mm
2" x 8mm
2" x 10mm
2" x 12mm



Folding Bracket

Size in Inch

2" x 6mm
2" x 8mm
2" x 10mm
2" x 12mm



Corner Folding Bracket

Size in Inch

2 x 12mm



Brass Folding Bracket

Size in Inch

3" x 1/2 x 8mm Cut
3" x 1/2 x 12mm Cut
3" x 1/2 x 8mm Full
3" x 1/2 x 12mm Full
4" x 2 x 12mm Cut
4" x 2 x 12mm Full



Glass Pivot

Size in Inch

2" x 6mm

2" x 8mm



Oval Socket

Size in Inch

3/4"

1"



Conceal Socket Heavy

Size in Inch

1"

Mirror Cap C.P. Finish

Size in Inch

1/2"

3/4"

1"

1.1/4"

1.1/2"



Brass Diamond Cap

Size in Inch

1/2"

3/4"

1"

Alluminium Diamond Cap

Size in Inch

3/4"

1"



Mirror Bracket (Steel+Brass)

Size

Half 6mm
Full 6mm



Mirror Bracket (Steel+Alluminium)

Size

Half 6mm
Full 6mm



Brass Mirror Bracket CP Finish

Size

Half 6mm
Full 6mm



Brass Diamond Mirror Bracket

Size

Half 6mm
Full 6mm



Alluminium Diamond Bracket

Size

Half 6mm
Full 6mm



Alluminium L Bat

Size in Inch

3/4"
1"
1.1/4"



Brass L Bat

Size in Inch

3/4"
1"



Brass Triangle Bat

Size

Brass Triangle Bat



Fancy Bat CP Finish

Size

Small
Big



Gate Hook

Size in Inch

2"
2.1/2"
3"
4"
5"
6"



Floor Pivot

Size

3" x 3/4"
4" x 1"
5" x 1"
6" x 1"



Panel Lock

Size in Inch

25mm
32mm
35mm
50mm



Push Magnet

Size

Medium
Heavy



Glass Hinges

Size in Inch

1.1/2" Round
1.1/2" Square
1.1/2" Square(Steel Plate)



Mango Glass Magnet

Size

6mm
8mm



P.G. Hinges

Size

P.G. Hinges
Diamond P.G.Hinges



Brass Glass Knob

Size

6mm
8mm



Cambolt

Item

170gm

182gm

200gm

Round Door Eye

Size in Inch

2"

2.1/2" Long Nut

3"

Round Door Eye+Cover

Item

Round Door Eye+Cover

Square Door Eye

Size

Square Door Eye

Triangle Door Eye

Size

Triangle Door Eye

Key Hole

Size in Inch

Round 8mm

Regular Medium

Big

Square Medium

Square Heavy

Hex

Cylinder Key Hole



Brass 12mm Towerbolt - 400gm

Size in Inch

4"

6"

8"

10"

12"



Brass 12mm Towerbolt - 600gm

Size in Inch

4"

6"

8"

10"

12"

15"

18"

24"



V-Hex Towerbolt - 680gm

Size in Inch

4"

6"

8"

10"

12"



Brass Marble Steel Rod-Light

Size in Inch

4"

6"

8"

10"

12"



Alluminium Towerbolt-12mm

Size in Inch

4"
6"
8"
10"
12"



Alluminium Towerbolt-10mm

Size in Inch

4"
6"
8"
10"
12"



Alluminium Xylo Towerbolt

Size in Inch

4"
6"
8"
10"
12"



Alluminium Zylo + L Hook

Size in Inch

4"
6"
8"
10"
12"



Capsule Towerbolt

Size in Inch

4"
6"
8"
10"
12"



Matka Knob Towerbolt-10mm

Size in Inch

4"
6"
8"
10"
12"



Zen Baby Latch

Size in Inch

Zen Baby Latch



Brass Khutti

Item

Brass Khutti



Window Stay

Size in Inch

8" - Regular

10" - Regular

12" - Regular

6" - Deluxe 2 pc.

6" - Fancy Deluxe 2 pc.



Laquer Finish Rs.18 / kg.
Antique Finish Rs.85 / kg.

Steel Butt Hinges - 1.5mm

Size in mm

3" x 16mm

3" x 14mm

4" x 14mm

5" x 14mm

3" x 12mm

4" x 12mm

5" x 12mm

6" x 12mm

5" x 3"

5" x 3" BR



Steel L Hinges - 1.5mm

Size in mm

75 x 10 x 6

75 x 10 x 12

75 x 10 x 19

75 x 12 x 6

75 x 12 x 12

75 x 12 x 19

75 x 12 x 25



Steel W Hinges

Size in Inch

2"

3"



Steel Towerbolt - 9mm

Size in Inch

4"

6"

8"



Steel Towerbolt - 10mm

Size in Inch

4"

6"

8"

10"

12"



Marble Towerbolt (Steel+Brass Hook)

Size in Inch

4"

6"

8"

10"

12"



Steel Folding Bracket

Size

3" x 1.1/2" x 8/12mm

4" x 1.1/2" x 8/12mm



Steel Conceal Socket-Regular

Size in Inch

3/4"

1"



Steel Conceal Socket-Heavy

Size in Inch

1"



Steel Mirror Cap

Size in Inch

1/2"

3/4"

1"



Steel Display Hook

Size in Inch

4"

6"

8"

10"

12"



Steel F Bracket 7.5mm

Size in Inch

4" x 6/8/10/12mm
6" x 6/8/10/12mm
8" x 6/8/10/12mm
10" x 6/8/10/12mm
12" x 6/8/10/12mm

Steel F Bracket 8mm

Size in Inch

4" x 6/8/10/12mm
6" x 6/8/10/12mm
8" x 6/8/10/12mm
10" x 6/8/10/12mm
12" x 6/8/10/12mm

Steel F Bracket 10mm

Size in Inch

4" x 6/8/10/12mm
6" x 6/8/10/12mm
8" x 6/8/10/12mm
10" x 6/8/10/12mm
12" x 6/8/10/12mm

Steel S/L Bracket

Size in Inch

6"
8"
10"
12"

Mirror Screw

Size in Inch

1/2"
3/4"
1"
1.1/4"
1.1/2"
2"
2.1/2"
3"

Brass Precision Parts



Pool Cover hardware

Size

as per requirement and availability



BRASS HYDRAULIC FITTINGS

Size

as per requirement and availability



Brass Plumbing fittings

Size

as per requirement and availability



BRASS INSERTS FOR MOULDING

Size

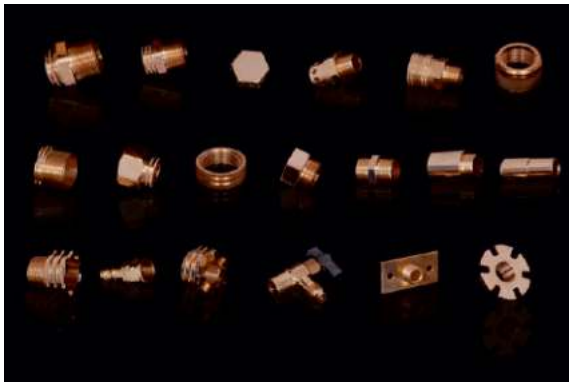
as per requirement and availability



Brass Precision Turned Components

Size

as per requirement and availability



Brass Precision Turned Components

Size

as per requirement and availability



Brass garden hose fittings

Size

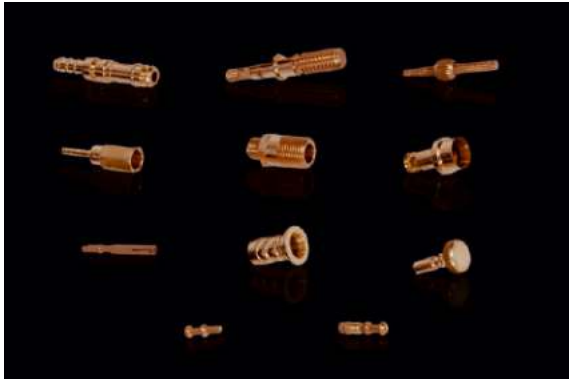
as per requirement and availability



Brass Sanitary pipe fittings

Size

as per requirement and availability



Brass auto parts

Size

as per requirement and availability



BRASS ELECTRICAL COMPONENTS

Size

as per requirement and availability



NICKEL PLATED BRASS COMPONENTS

Size

as per requirement and availability



Brass Ball Valve

Size

as per requirement and availability



PrajvalTM

PREMIUM BRASS HARDWARE

Manufacturer & Supplier

All kind of Brass Parts Specialist in Hardware Parts

PATEL METAL PRODUCTS

(Gujarat) INDIA.

Mo. +91-90995 91982